

coolWIRE™

Raceway Wire Management Systems

- Up To 900% More Cables
- Fast, Easy & Lower Cost Installations
- Cooler Wires
- Flexible for Design Changes
- Reduce Harmonics (Noise)
- Increase Efficiency
- Lower Energy Costs
- Less Maintenance
- Minimize Lost or Incorrect Data
- Long Life Cycle
- Reduce Fire Hazards
- Ideal For Remodel or Renovation
- Minimum Downtime
- NEC Code Compliant
- LEED (Green) Credits

“Your product offers a solution to the problem of over-heating in cables.

John C. Lane
United States Regulatory
Commission

coolWIRE™ was proudly installed in the first LEEDS certified school building in the state of Ohio at C-TEC (Career & Technology Education Center) in Licking County.

coolWIRE™ raceway management systems are easy to install. For new raceways coolWIRE™ is laid in the open raceway or wireway along with the cables during their installation.

For existing raceway systems simply open the raceway cover plates and add coolWIRE™ sections while dividing the wires.

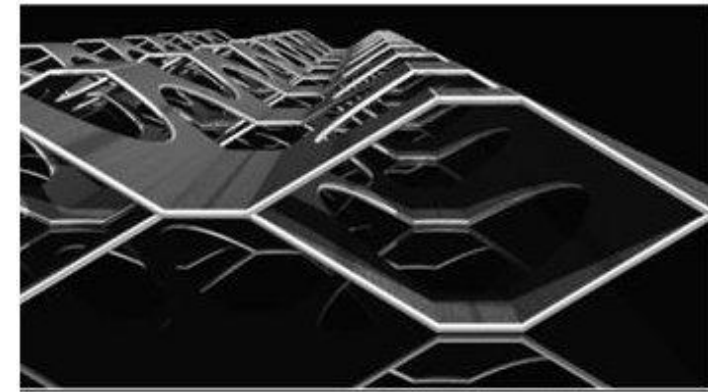
coolWIRE™ provides standard sizes for all manufactured raceway systems and newly custom designed ones as well. Feel free to contact our office for more information.

CVC Limited 1 LLC

740.605.3853

www.cvccone.com

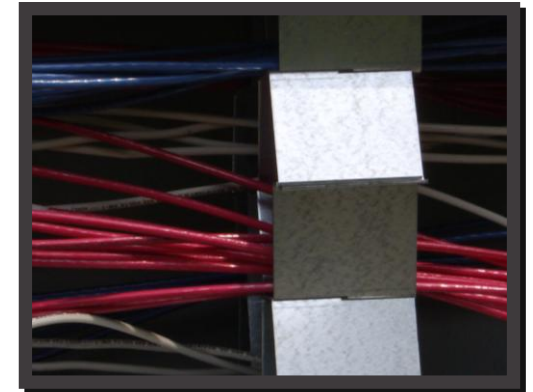
ccardi@cvccone.com



coolWIRE™

Raceway Wire Management Systems

coolWIRE™ is an innovative and patented technology that enables you to **increase** the capacity of wire raceways up to 900%.



coolWIRE™ technology complies with the National Electrical Code and can significantly reduce labor and material costs on new installations and renovation work of existing structures.

coolWIRE™

Raceway Wire Management Systems

coolWIRE™ technology delivers immediate and long-term cost savings, creates less maintenance, reduces harmonics (noise), dramatically eliminates false or lost data and allows flexibility for building design and construction changes.



With coolWIRE™ you can drastically reduce your installation time, and shorten your construction timeline. coolWIRE™ can also increase wire management system capacity and allow for future upgrades.

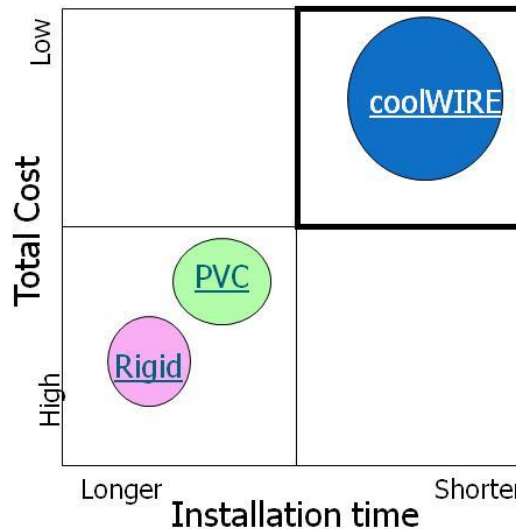
“Our objective is to identify technologies that have the greatest potential to CBEA’s (Commercial Building Energy Alliances) members. There won’t be any losers resulting from this process.”

Dave Hunt, CEM, CMVP
Department of Energy
Pacific Northwest Laboratories

coolWIRE™ Advantage Example: #12 Wires/20 Amps						
Dimensions		Current Code		coolWIRE™ Advantage		
Underfloor Size	Square Inches	Total Wire Allowance	Total Amps Allowance	Total Wire Allowance	Total Amps Allowance	Increased Capacity
3 x 6	18	9	180	40	810	444%
3 x 12	36	9	180	81	1620	900%
3 x 18	54	9	180	121	2430	1340%
3 x 24	72	9	180	162	3240	1800%
3 x 30	90	9	180	202	4050	2240%
3 x 36	108	9	180	243	4860	2700%

Comparison to other wire management alternatives

5000 sq. ft High-Rise Building - *Using RSMeans Construction data and prevailing labor rates



	coolWIRE	PVC	Rigid
Total cost	\$7,220*	\$24,732*	\$26,010*
Time to Install	0.5 days	10 days	10 days
Add'l Capacity	YES	No	No